



PORT VALE

FOOTBALL CLUB
1977.78

FOOTBALL LEAGUE DIVISION THREE

OFFICIAL MATCH DAY MAGAZINE 15P

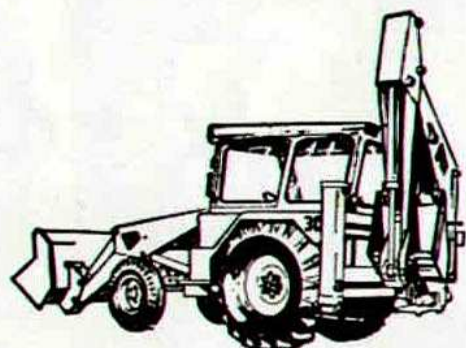
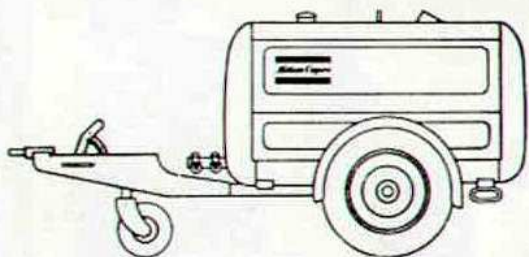
SWINDON TOWNE

SATURDAY, 11th MARCH, 1978 — Kick-off 3.00 p.m.



attwood

PLANT HIRE LIMITED

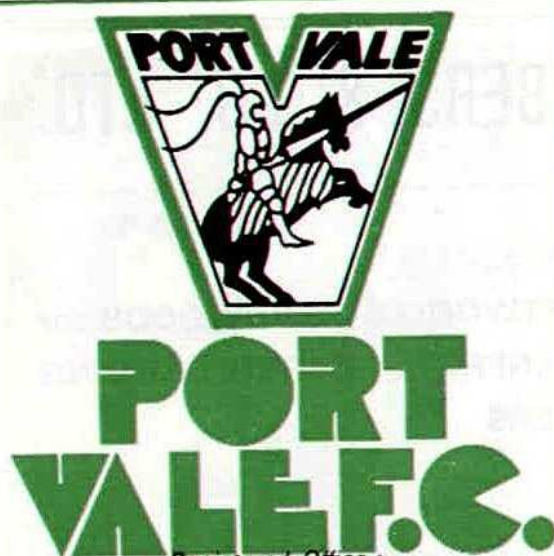


- HYMACS . DROTTS . COMPRESSORS
- JCB'S . MF EXCAVATORS . TIPPERS
- DUMPERS . WELDING SETS
- CONCRETE MIXERS . WATER BOWSERS
- WATER PUMPS . VIBRATING POKERS
- VIBRATING ROLLERS . MINI MIXERS
- BOMAG DOUBLE DRUM ROLLERS
- KANGO HAMMERS . EARTHMOVING
- LEVELLING . EXCAVATION

NEWTOWN HOUSE, UTTOXETER ROAD, LONGTON, STOKE-ON-TRENT Telephone : (0782) 315536, 315537, 315633

THE COMPLETE PLANT HIRE AND EXCAVATION SERVICE TO ALL INDUSTRIES

Associate Company : BANKS-ATTWOOD (COMPRESSORS) LIMITED



Registered Office:

VALE PARK . BURSLEM
STOKE-ON-TRENT . ST6 1AW

Telephones:

Main Office 87020 . Pools Office 85524

President: M. J. SINGER

Directors:

Chairman: A. McPHERSON

Vice-Chairman: J. BURGESS

M. J. SINGER L. W. CLIFF

D. RATCLIFFE, JP D. J. ATTWOOD

Manager: BOB SMITH

Assistant Manager: DENNIS BUTLER

Secretary: ANDREW WATERHOUSE

Player-Coach: GRAHAM HAWKINS

Physiotherapist: LOL HAMLETT

Commercial Manager: ROY COPE

Medical Officer: DR. R. D. GLAISTER

Dental Surgeon:

ANDREW R. BARKER, BDS (Manc.)

THOUSANDS OF PRIZES FOR 20p! THE VALE LOTTERY WHERE ELSE?

PORT Vale Supporters Club, who appeared to be facing an uncertain future, are now looking ahead with renewed confidence.

At the annual meeting, held at Vale Social Club, a proposal to reduce in numbers the existing committee from 11 to eight was carried and sufficient volunteers were forthcoming to fill the places.

All three principal officials needed replacing following the decisions by chairman **Keith Garner**, secretary **Jim Frain** and treasurer **Derek Bourne** to resign. Keith and Jim had been in "on the ground floor" when a fund-raising committee was formed some seven years ago and eventually became the Vale Supporters Club (1972).

Derek joined later, succeeding Keith as treasurer, and a debt of gratitude is owing them all for their work over the years. Some £30,000 was raised in five years.

New Supporters Club chairman is **Bill Lodey**, a full-time worker with the football club. Bill's wife, **Lea**, and **Miss Wendy Lea** are the new joint secretaries and **Walter Johnston**, of Congleton, becomes treasurer.

An important function of Golden Goal organiser is due to be filled by **David Wright**. The match day "Golden Goal" competition raised for the Supporters Club an annual £2,000 until it was agreed to hand over the proceeds to the parent body.

This reduced the supporters' income and made it difficult to finance projects. Now the Golden Goal competition has been retrieved and the profits will go to projects decided upon by the Supporters Club.

The success of the Golden Goal depends on supporters buying tickets and those willing to sell them, and anyone over the age of 16 willing to give up 20 minutes of their pre-match time should contact the club.

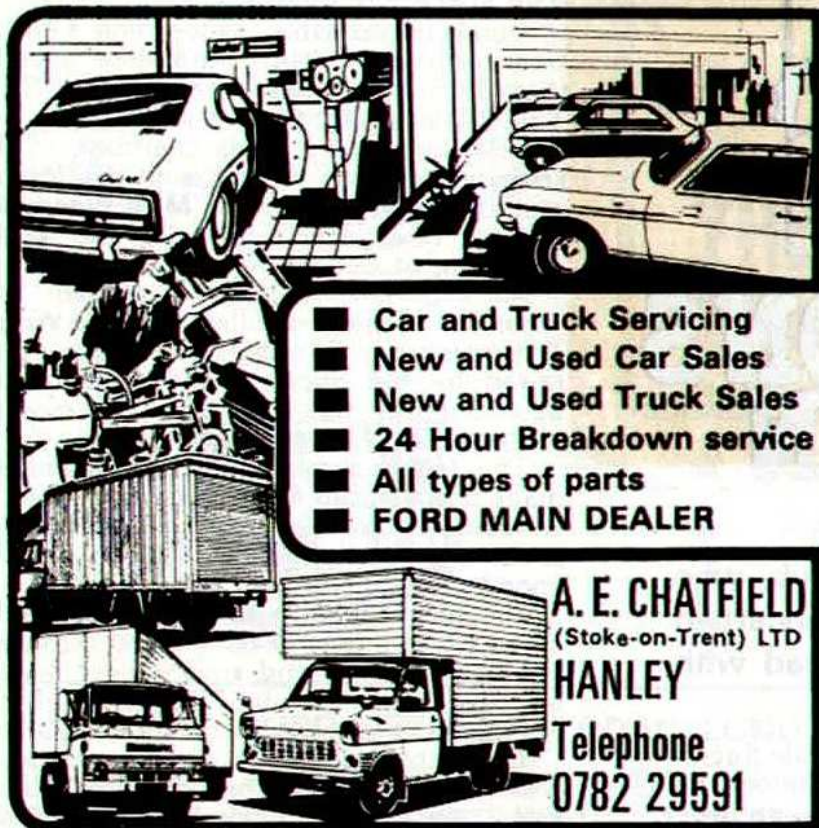
The Supporters Club committee line-up is completed by **Dave Dutton** (membership), and 2 new faces in **Chris Bayley** and **Philip Ashley**. We hope you, in turn, give them all your support.

PORT VALE





Chatfields for



- Car and Truck Servicing
- New and Used Car Sales
- New and Used Truck Sales
- 24 Hour Breakdown service
- All types of parts
- FORD MAIN DEALER

A. E. CHATFIELD
(Stoke-on-Trent) LTD

HANLEY

Telephone
0782 29591

F. G. CHAMBERS & CO. LTD.

Extensive Stocks of . . .

**IMPORTED SOFTWOOD & HARDWOODS for
HIGH CLASS JOINERY or GENERAL BUILDING
and CASE TIMBERS**

also . . .

**PLYWOOD - BLOCKBOARD - CHIPBOARD
HARDBOARD - ETC.**

Distributors of . . .

FORMICA - CONTIBOARD - CONTIPLAS

Please write or call at our new, modern premises . . .

NORTH STREET - STOKE-ON-TRENT - STAFFS.

Telephone : 0782-45133 (7 lines)



BOB SMITH

IT is an important aspect of a manager's job to watch all his teams in action because there is much to be gained from watching players at levels below the senior side.

A player who gives his best in the reserves or 'A' team can be guaranteed not to fail for lack of effort when he plays in the first team, and I have derived much from watching the Youth team progress this season.

When the time came to deliberate selection for last Wednesday's visit to Bradford all manner of thought was given to a number of players before I decided to include Russel Bromage and Neville Chamberlain.

Lack of experience was against them but then those players with experience had not been using it. I then recalled the efforts of these two youngsters in Youth Cup games when it would have been easier for them not to have played.

Russel has turned out in matches when he has clearly not been fit but this has not prevented him from battling his way through. Neville, too, has been troubled by a thigh injury but despite this he has stayed the course, especially in the game at Blackburn.

It was these qualities in the players which prompted me to include them in a tough

climate at Bradford. Debuts are an ordeal at the best of times, but to play away from home in a vital match was even more demanding.

The few supporters who made the journey to Valley Parade will no doubt have sung the praises of the two lads in a splendid team effort. They exceeded expectations for me and while the game may not have been particularly glamorous, the result was all important.

Pride in wearing the shirt was restored following some honest talk with the players and the determination to do well showed through. Now, for me, they have set the standard for the rest of the season.

It has been a busy week in terms of transfer activity and we have experienced success and disappointment at Vale Park. Mick Moore's signing from Wigan should give us extra strength in attack while John Lumsdon, on loan from Stoke, is the orthodox right full-back we have recently been lacking.

This is not to discredit the efforts of Kenny Beech who has done a good "character" job for us at Number 2 when out of position. The experience will no doubt have done him some good and, hopefully, even help to improve his game.

**PORT
VALE**



Lewis's

TRAVEL BUREAU

- Over 50 years of the best kind of experience
- Agents for all the leading Continental and British tour operators
- Famous for Lewis's own Inclusive Holidays in Britain and the Channel Islands
- Members of the Association of British Travel Agents

**NORTH STAFFORDSHIRE'S
LEADING TRAVEL SERVICE**

**Lewis's Travel Bureau
Lamb Street, Hanley
Telephone (0782) 24533**

*Lewis's Travel Bureau is part of the
Lewis's/Selfridges group of department stores*

DALES SPORTS



**IF YOU WANT
SPORTS . . . YOU
WANT DALES**

**97/99 STAFFORD STREET . HANLEY
(Opposite Lewis's) . Telephone 22846**

FOCUS ON



DURING the televised highlights of Carlisle United's F.A. Cup-tie with Manchester United, commentator John Motson said of Bill Rafferty: "Surely this player is too good to be in the Third Division".

Perhaps it was a remark picked up by Wolves boss, Sammy Chung, for Rafferty now finds himself back in the First Division with the Molineux club following a deal worth £125,000 to the Cumbrians.

For Glaswegian Rafferty it was a return to the Midlands, where his career began with Coventry City. "I did not have a fair crack of the whip at Coventry", says Rafferty, whose subsequent moves took him to Blackpool and Plymouth (where he formed a deadly partnership with Paul Mariner) before Carlisle.

Not that money also guarantees a signing. **Gillingham**, after successive defeats at Bradford City and Rotherham, endeavoured to bolster their defence and replace the departed David Shipperley with a £50,000 offer to Hull for Welsh international Dave Roberts.

Also in for Roberts were **Bradford City** with a reported £40,000 bid, but the player declined dropping into the Third. He still wants to prove himself at top level and favours a move south to do so.

Modest spenders **Exeter** forked out a club record fee of £15,000 for Plymouth's 24-year-old midfield player John Delve, who was formerly with Q.P.R. Exeter had previously not spent more than £10,000 on a player as was the case with both John Templeman and Lammie Robertson, who joined the club from Brighton in May, 1974.

Championship favourites **Wrexham** suffered a blow when Welsh international goalkeeper Dai Davies damaged a hand in their F.A. Cup victory against gallant Blyth Spartans on the Newcastle ground.

Arfon Griffiths, named as manager of the month for February, was left with only teenager Eddie Niedzwiecki on the professional staff and among the names mentioned as possible replacement was Manchester United's Alex Stepney.

The situation did not look too bright when busy Wrexham went down to a rare defeat at **Oxford**, but they bounced back to beat **Exeter** and then hammer promotion rivals **Tranmere** 6-1 in their highest-scoring performance of the season.

When **Swindon** played **Lincoln** a week ago it was a special occasion for long-serving defender John Trollope. It was his 831st senior game for Swindon, equalling Jimmy Dickinson's record for Portsmouth. Trollope beat the record this week against Preston and is now expected to be phased out as he takes on the role of youth team manager.

High-flying **Preston** enjoyed a brief rule at the top of the table following their 3-1 win over Bradford City. Previously Preston had beaten **Colchester** 4-0 with Alex Bruce scoring all the goals to take him over the 20 mark.

Strugglers **Hereford**, whose sales this season include those of midfield men Roy Carter (to Swindon) and, more recently, Les Briley, to Wimbledon for £16,000, won their first game in 16 with a penalty from Barton against Colchester. It was the only goal of the match.

PORT VALE



SWINDON TOWN

JIM ALLAN (goalkeeper) — Scot from Inverness who joined Swindon as an apprentice in October, 1970, from Brora Rangers. Turned pro in July, 1971, and made his debut 2 months later. Has now topped 100 appearances.

JOHN McLAUGHLIN (defender/midfield) — Londoner who served an apprenticeship with Colchester and then made 66 League appearances. A former England Youth player, he cost Swindon a £25,000 fee in December, 1973, and has since been a regular member of the team either in defence or the middle of the park.

ANDY FORD (defender) — Played for Somerset Schoolboys and Youths and joined Bournemouth on leaving school. After 2 years he moved to Southend and became a first-team regular, winning their "Player of the Year" award last season. Joined Swindon last August.

STEVE AIZLEWOOD (central defender) — Began his League career at the age of 16 with Newport County and made 191 appearances before being transferred to Swindon in March, 1976. Won 4 Welsh under-23 caps with Newport.

COLIN PROPHETT (central defender) — Played as an amateur for Crewe Alexandra, his home-town club, but made his name with Sheffield Wednesday, totalling 113 appearances. Joined Norwich in 1973 and had 34 First Division games before moving to Swindon in September, 1974.

CHRIS KAMARA (midfield) — Born in Middlesbrough and signed schoolboy forms for that club. Became an apprentice, however, with Portsmouth and signed full terms in December, 1975. Made 64 senior appearances before signing for Swindon in August last year.

RAY McHALE (midfield) — Native of Sheffield, he played 123 games for Chesterfield before moving to Halifax in October, 1974. Hardly missed a match in 2 years and was leading goal scorer in 1975-76. Bargain price took him to Swindon in September, 1976.

KENNY STROUD (midfield) — Became an apprentice with Swindon and turned pro in 1970. Had to wait several seasons to gain a regular senior spot but started this term with 120 appearances to his credit. Has played as a central defender but is now recognised in midfield.

DAVID MOSS (forward) — Signed from non-League football with Witney, his local team, and made his League debut in April, 1972. Had played 172 games at the start of this season and was last term's leading scorer and "Player of the Year". An orthodox winger who can play on either flank.

CHRIS GUTHRIE (forward) — Newcastle-born, he made a handful of appearances for his home-town club and then moved south to Southend, where his goal-scoring feats led to a big-fee transfer to Sheffield United in summer, 1975. Did not settle, however, and joined Swindon in July, 1977 for £25,000.

PHIL "CHIC" BATES (forward) — Joined Swindon recently in a £30,000 deal from Shrewsbury. Hard-working front player from West Bromwich who linked up with Shrewsbury from Stourbridge at the end of the 1974-75 season to spearhead their promotion from the Fourth Division.

DAVID CUNNINGHAM (midfield/forward) — Scot from Kirkcaldy, his first club was Brechin City. He then moved south to Southend and then had a spell on loan to Hartlepool before joining Swindon on a free transfer last summer.

JOHN TROLLOPE (defender) — Has just established a club record 832 appearances spread over some 18 years. Joined the club as a pro in August, 1960, and was a member of the Swindon side who beat Arsenal in the 1969 League Cup final at Wembley.

ROY CARTER (midfield) — A recent £20,000 signing from Hereford, his only former League club. Falmouth-born, he joined Hereford from Western League football in February, 1975, and made his debut in the final game of the 74-75 season.



Back Row (left to right) : M. French, K. Stroud, R. Brinkworth, R. Lewis, A. Gilligan, P. Collicut. **Middle Row** : J. Allan, J. Trollope, C. Prophett, C. Kamara, C. Guthrie, S. Aizlewood, A. Ford, K. Roberts. **Front Row** : D. Moss, D. Cunningham, J. McLaughlin, T. Anderson (now Peterboro) H. Goddard (now Newport).

WELCOME



**MIDLANDS
ABRASIVES
LIMITED**



**The Midlands largest distributors for
Unicorn Abrasive Products**

—:—
*D.I.Y. SANDPAPER, WET & DRY PAPERS
and*

*DISCS for PORTABLE TOOLS
available from Stock*

—:—
**UNIT ONE . FEDERATION ROAD
BURSLEM STOKE-ON-TRENT**
Telephone : 0782-89034/5/6

Burgess' **PASTRYCOOKS
CONFECTIONERS
and RESTAURATEURS**

We invite you to choose your **Wedding Cake** from our
extensive range of **One, Two and Three-Tiered Cakes**

Also **Sausage Rolls, Pies,** and a **Full Range of Morning and
Dairy Goods Freshly Baked . . . on sale at our Branch Shops**

If you would like an intimate atmosphere suited to quiet
conversation together with a good meal then visit our . . .

BRUNCH BARS at **IRONMARKET** and **HIGH STREET,**
NEWCASTLE, STAFFS.; or **THE STRAND, LONGTON,**
STOKE-ON-TRENT, STAFFS.

BRANCHES AT — **Tontine** and **Stafford Street, HANLEY;**
High Street, TUNSTALL; **Campbell Place** and **Church**
Street, STOKE; **Queen Street, BURSLEM;** **Victoria Road,**
FENTON; **Dorothy Cafe, LONGTON;** **Western Road,**
MEIR; and **Church Street, AUDLEY.**

BLACKFRIARS BAKERY . NEWCASTLE
STAFFORDSHIRE . Telephone : (0782) 617824

The first goal that long-serving TERRY MILES scored for the Vale in his 15 years with the club still lives in his memory, and with good reason.

"It was against Norwich City at Vale Park", recalls Terry vividly. "Their goalkeeper, Kevin Keelan, threw the ball out to a defender and I nipped in to intercept. As the ball dropped I just hit it, and it flew in from around 35 yards".

Terry became one of the most loyal servants the Vale have ever known after being signed as a professional by Freddie Steele at 17½. "Cliff Birks, the chief scout invited me up to the Vale for a game and I signed amateur forms at 16. I had been with Milton Youth Club and there were three of us, Harry Poole and John Massey were the others, who went to Vale", says Terry.

He was playing in the Cheshire League at 17 and recalls his sudden call-up to the first team a couple of years later. "I was at home listening to the local team news on the radio and when it came over that Dickie Cunliffe had cried off with flu and Terry Miles was making his debut on the left wing I almost dropped my cup of tea".

That game, at Vale Park, was against Q.P.R. "It was an ordeal, as all debuts are, and I was glad to get it over with", says Terry, who had never played in front of a crowd before.

He promptly went back into the reserves and then came a change in fortune when Freddie Steele was replaced as manager by Norman Low. "In a matter of weeks I was recalled at wing-half and I stayed in the side from that time on", he recalls.

Terry, and his blood-brother Harry Poole, played scores of games for the club and those he remembers to this day include the cup-ties with Sunderland and Aston Villa.

"I have never known such excitement as in the replay win against Sunderland. It was such an upset", says Terry. "For the Villa game there were 49,000 people on the ground and I thought the least we deserved was another game instead of losing 2-1.

Terry reckons that the Vale team of his day would have given any side a game. "I really enjoyed playing for the club. It was full of characters and the spirit was tremendous", he says.

He now helps in the running of Wolstanton Park Rangers in the N. Staffs. Sunday League.



**PORT
VALE**



FOLEY TIMBER/ FOLEY JOINERY CENTRE

Standard Windows and Doors
Purpose-made Joinery
Sheet Material and Timber

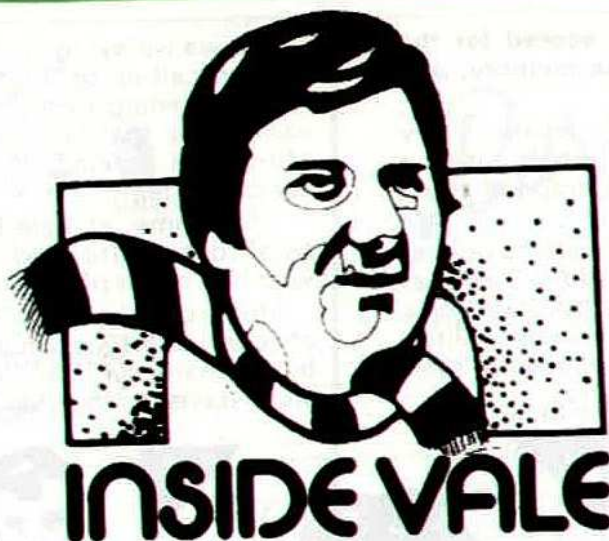
SUPPLIERS TO THE TRADE
AND GENERAL PUBLIC

FOLEY WORKS . FOLEY ROAD
FENTON . STOKE-ON-TRENT

Telephone : 311227 - 317251

**armitage
shanks** **A**

Divisions of Armitage Shanks
Manufacturing Ltd.



LIGHTNING, it is said, does not strike twice in the same place, but for 2 of our lucky competition participants it has done just that recently.

First, our youth team player, Neville Chamberlain, made the February "200 Club" draw at the Walsall match and the number to be pulled out for a second time was 19, belonging to Miss Wendy Lea, of Tunstall, who collected the £100 first prize to add to her previous winnings.

Mr. Miller, an excellent agent from Smallthorne, won the £50 second prize and £25 went to Mr. Johnson, of Burslem, in third place.

Another "double" winner was Mrs. Brindley, of Middleport, on the lottery. Mrs. Brindley became our first £1,000 winner on the instant ticket and she then called into the office to claim another big win, this time of £100.

I gather that Mrs. Brindley speculates quite a lot on the lottery tickets and there are a number of others who purchase quite a quantity in their search for the major prizes. Perhaps they are lottery addicts!

ROY COPE — Commercial Manager.

PORT VALE out strip the opposition with



Outstrip the opposition by
choosing from the wider than
ever range of Bukta sportswear.

Send today for your free
full colour brochure to:

**Bukta, Brinksway, Stockport,
Cheshire SK4 1ED,**
enclosing stamp to cover postage.

STATISTICS

LEAGUE APPEARANCES/GOALS

	A	G
BAILEY	26	— 3
BEAMISH	31	— 9
BEECH	23	— 1
BENTLEY	24	— 0
BROMAGE	1	— 0
BROWNBILL	19	— 3
CHAMBERLAIN	1	— 0
CONNAUGHTON	25	— 0
CULLERTON	8	— 2
DANCE	8	— 0
DULSON	10	— 0
FROGGATT	5	— 1
GRIFFITHS	22	— 3
HARRIS	30	— 2
HAWKINS	4	— 0
HEMMERMAN	13	— 5
LAMB	32	— 3
MCGIFFORD	20	— 0
RIDLEY	28	— 0
SUTCLIFFE	24	— 4

THIRD DIVISION PLACINGS (as a 9th March)

	P.	W.	D.	L.	F.	A.	Pts.
Wrexham	31	17	9	5	54	32	43
Cambridge	34	17	9	8	59	41	43
Preston	33	16	11	6	49	28	43
Gillingham	34	13	14	7	56	45	40
Tranmere	33	14	10	9	45	33	38
Walsall	32	12	13	7	41	33	37
Bury	32	12	12	8	48	38	36
Peterboro	31	12	11	8	25	23	35
SWINDON	30	12	10	8	49	40	34
Colchester	33	11	12	10	44	35	34
Chester	33	8	18	7	38	44	34
Shrewsbury	34	11	11	12	47	44	33
Carlisle	33	9	15	9	42	41	33
Chesterfeld	31	12	8	11	37	31	32
Lincoln	34	10	11	13	34	41	31
Exeter	33	11	8	13	36	45	31
Oxford	34	10	10	14	46	50	30
Sheffield Wed.	33	8	12	13	34	41	28
PORT VALE	33	6	14	13	36	51	26
Hereford	32	7	11	14	24	42	25
Rotherham	29	8	8	13	34	44	24
Plymouth	32	6	12	14	37	49	24
Bradford	32	8	8	16	39	56	24
Portsmouth	34	4	14	16	31	58	22

WHO'S THERE?

MICHAEL G. PECK, of Doncaster, started refereeing in 1965 and has progressed via the West Lancashire and Central League to the Football League list.

He lined the 1975 Scotland v N. Ireland match in the Home International series and refereed the first leg of the F.A. Challenge Trophy semi-final last year.

A married man with 2 children, he is a schoolmaster who enjoys playing cricket and badminton as well as listening to all kinds of music. He is a former secretary of the Lancashire-Morecambe Referees' Society and a past secretary of the Lancashire Referees' Association.



PORT VALE



NORMAN JOHNSON

A.I.B.A.

Incorporated Business Agent

—:—
ESTATE AGENT —

**COMMERCIAL and INDUSTRIAL
BUSINESS SALES SPECIALIST**

—:—
17 PERCY STREET . HANLEY

STOKE-ON-TRENT

Telephone 25207-8

H.B.S. (Builders LTD.)

BUILDERS & CONTRACTORS

—●—
NORTH LODGE

LOWER TEAN

STAFFS . ST10 4LN

—●—
Telephone :

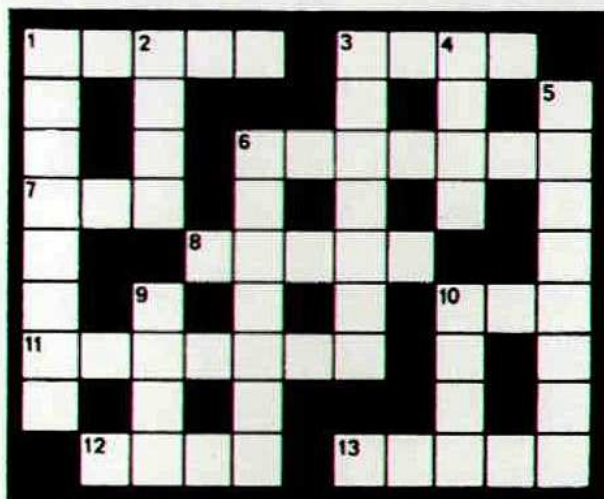
TEAN 2029

- STOKE-ON-TRENT 816217

So you think you know your Football!



SOCCER NINETY-NINER No. 11



SOLUTION to the Soccer Ninety-Niner — No. 10 which was set in the Shrewsbury Match Magazine, 4th March, 1978 :—
Across : 1—Harry Gregg; 7—Clay; 8—See 15ac; 9—Lund; 14—See 12dn; 15—and 8ac Alan Ball; 16—Lees; 17—Seven-a-side. **Down :** 2 & 13dn—Allen Wade; 3—Royle (ex Everton); 4—Glentoran; 5—Gray (Villa); 6—Alf; 10—Ellis; 11—Field; 12 & 14ac—van Gool; 13—See 2dn.

Printed by Keates Limited, Clough Street, Hanley

CLUES (Across)

- 1 & 7ac. Former Southampton and Walsall full-back who joined Salisbury this year (5,3).
3. How a manager is often referred to (4).
6. Scotland's "Player of the Year" for 1976/77 (7).
7. See 1ac.
8. Johnson or Jones (5).
10. Derby players have free use of one each from 4dn (3).
11. One of the new clubs in this season's extended League of Ireland (7).
12. Old Manchester United and Eire full-back : ——— Brennan (4).
13. Former regal-sounding striker with Crystal Palace and Orient (5).

CLUES (Down)

1. League ever-present and top scorer for Carlisle last season (8).
2. ——— Rowell (Sunderland) (4).
3. Nickname of West Bromwich Albion (7).
4. Sponsors of Derby County (4).
5. He followed Maurice Setters as manager of Doncaster Rovers (8).
9. & 6. Former Plymouth Argyle winger now with Charlton Athletic (4, 7).
10. Bournemouth forward who played for Seattle Sounders during the summer (4).

Solution in next issue of the Match Magazine.
 1977/78 Series — © PQRS.

NEXT AT HOME

HEREFORD UNITED



MONDAY, 20th MARCH—Kick-off 7.30 p.m.



PORT VALE



TEAMCHECK

PORT VALE

John CONNAUGHTON

John LUMSDON

Neil GRIFFITHS

John RIDLEY

David HARRIS

Graham HAWKINS

Neville CHAMBERLAIN

Alan LAMB

Mick MOORE

Ken BEAMISH

Terry BAILEY

Sub :

SWINDON TOWN

1 Jimmy ALLAN

2 John McLAUGHLIN

3 Andy FORD

4 Kenny STROUD

5 Roy CARTER

6 Colin PROPHETT

7 David MOSS

8 Chris KAMARA

9 Chris GUTHRIE

10 Ray McHALE

11 "Chic" BATES

12 Sub :

Referee : Mr. MICHAEL PECK, Doncaster

Linesmen : Mr. J. J. LYDON, Warrington (Red Flag)

Mr. D. N. HARWOOD, Nottingham (Yellow Flag)



THE DIRECTORS WISH TO
EXPRESS THEIR SINCERE
APPRECIATION TO
DALE SPORTS
OF HANLEY
WHO HAVE KINDLY DONATED
THE BALL
FOR THE MATCH

HALF TIME

A	BRADFORD CARLISLE UNITED	K	BRIGHTON & H. A. STOKE CITY
B	BURY PORTSMOUTH	L	BIRMINGHAM CITY IPSWICH TOWN
C	CAMBRIDGE UNITED HEREFORD UNITED	M	BRISTOL CITY EVERTON
D	CHESTER ROTHERHAM UTD.	N	COVENTRY CITY LEICESTER CITY
E	EXETER CITY LINCOLN CITY	O	LIVERPOOL LEEDS UNITED
F	GILLINGHAM PRESTON N.E.	P	MANCHESTER CITY NOTTS FOREST
G	OXFORD UNITED COLCHESTER UTD.	Q	MIDDLESBROUGH CHELSEA
H	SHEFFIELD WED. WREXHAM	R	NEWCASTLE UTD. MANCHESTER UTD.
I	SHREWSBURY TOWN PETERBOROUGH U.	S	NORWICH CITY ASTON VILLA
J	WALSALL CHESTERFIELD	T	Q.P.R. ARSENAL